



**BUILDING  
WITH OUR  
HANDS**

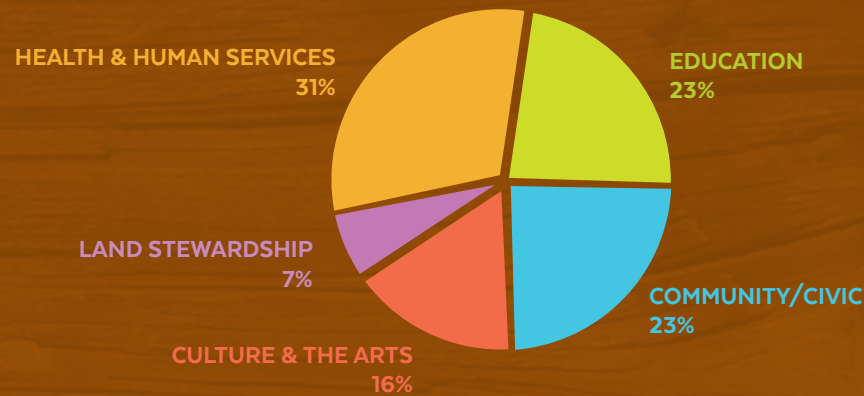
**GIVING  
WITH OUR  
HEARTS**



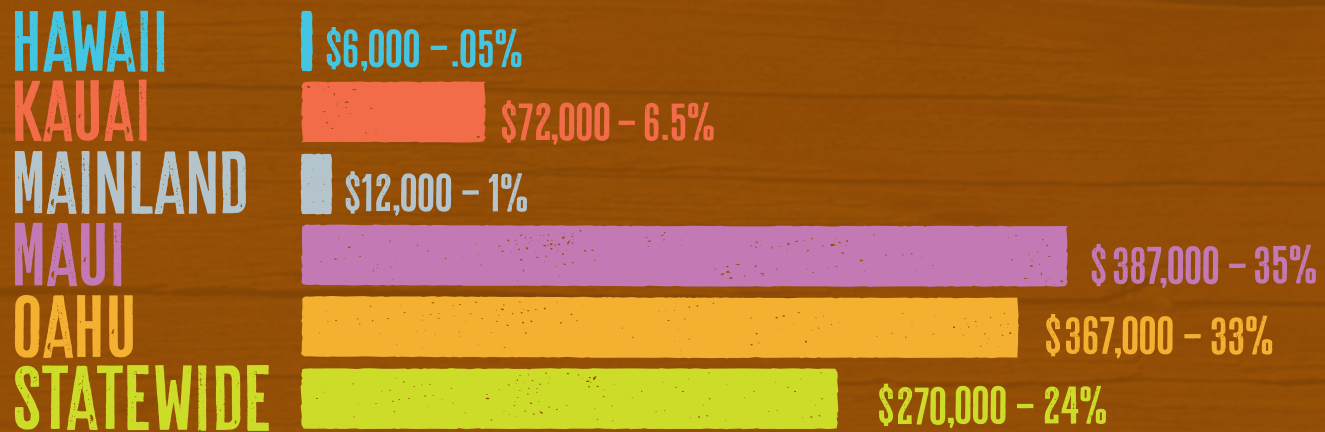
ALEXANDER & BALDWIN, INC.  
REVIEW OF GIVING · 2015

# In 2015, Alexander & Baldwin's Kokua Giving contributions totaled **\$1.1 million** to 310 organizations.

## Program Distribution



## Geographic Distribution



### MESSAGE FROM THE CHAIR



## Building with Our Hands, Giving with Our Hearts

Alexander & Baldwin's philanthropic traditions are as deeply rooted in Hawaii as our company's 146 years of business activities in the Islands.

In 2015, A&B's Kokua Giving contributions totaled \$1.1 million to 310 organizations, small and large. These community investments extended across the island chain and generally fell into five categories: health and human services, education, community/civic, culture and the arts, and land stewardship.

Our company's monetary and in-kind support was bolstered by the generosity of A&B's 1,500 employees who rolled up their sleeves and opened their hearts to build stronger communities with their gifts of time, skills, leadership guidance and personal resources. They could be found picking up trash on beaches, organizing food drives, pitching in at community events, leading youth activities and walking miles for a variety of charitable causes.

This 2015 Review of Giving is a tribute to our employees and to the hundreds of community organizations that we are proud to call our partners. The important work they do - with their hands and with their hearts - fills a broad range of needs that both enrich and improve the communities they serve.

In 2016, we will reluctantly bid 'aloha' to the employees of HC&S as sugar operations come to an end. Active members of their communities, these individuals embody the values of hard work, caring for neighbors and commitment to their communities—values that are deeply embedded and will endure. They will continue contributing to Maui's well-being and helping to shape its future, just as Alexander & Baldwin will continue to keep the Maui community in its charitable priorities.

Sincerely,

Meredith J. Ching  
Chair  
Alexander & Baldwin Kokua Giving



Visit the "Corporate Responsibility" page at [alexanderbaldwin.com](http://alexanderbaldwin.com) to find expanded overviews and video stories about A&B's charitable activities.



# ON OAHU



## Windward Oahu Youth Equipped for Success

The thrill of the game, learning new skills and making new friends are what draw youth to team sports, but it's the larger life lessons they learn, like the importance of good sportsmanship – win or lose, on or off the field – that will serve them long after the game is over.

To give its 540-plus members opportunities to participate in after-school sports, The Boys & Girls Club of Hawaii's Windward Clubhouse, based on the grounds of Kailua Intermediate School, joined their parent organization's Sports League in 2012. This 'learning league' program introduces youngsters to such sports as basketball, volleyball and flag football, and field games against other clubs around Oahu.

With support from Alexander & Baldwin, the Windward Clubhouse was able to purchase new equipment for its sports programs. The grant also helped pay for referees and secure bus transportation to take its young athletes to 'away' games in Waianae, Nanakuli, Ewa Beach and Honolulu.



The Windward Clubhouse welcomes kids ages 7 to 17, offering a safe place to learn and grow.

## LAND STEWARDSHIP Kupu Hawaii

In Hawaiian, kupu means "to sprout, grow or germinate." For the past 9 years, Kupu Hawaii has lived up to its name by cultivating green job skills among Hawaii's future workforce. Kupu engages up to 17,000 volunteers annually, providing paid internships to local youth in the areas of natural resource management, renewable energy and energy conservation.

To support Kupu's innovative mission, A&B has pledged \$50,000 for Kupu's new Kakaako Green Job Training Center. Located at Kewalo Basin, the center will be a first-of-its-kind facility dedicated to creating future leaders in the green jobs sector – one of the fastest growing sectors of Hawaii's economy.

The Sports League enhances and enlarges the world around our club members... We are so appreciative to Alexander & Baldwin for helping us make that happen!"

- Maureen Purington  
Director, BGCH Windward

## Kapolei Schools Benefit from Grace Pacific's Generosity

Over the past decade and a half, since Kapolei Middle and Kapolei High Schools opened not far from Grace Pacific's administrative headquarters and quarry operations in West Oahu, the company has built and nourished an enduring partnership with the two schools.

Invaluable in-kind contributions such as portable power lights and other safety and traffic control equipment for band festivals, graduations and other special events have saved the schools thousands of dollars over the years, including more than \$10,000 in 2014 and 2015. Company volunteers have added their sweat equity to the partnership by participating in the high school's community work days.

Kapolei's four elementary schools also have enjoyed Grace Pacific's long-standing support through the company-sponsored Outstanding Keiki Awards program. Each year since 1997, 80 fifth graders selected by their teachers for their good citizenship, academic achievements, community service and leadership, spend a fun day at Timberline Camp, followed by an awards dinner with their families at Kapolei Middle School. These students are then eligible to apply for a college scholarship from Grace Pacific when they graduate from high school.

When it comes to human capital, they are truly a community-driven organization."

- Elden Esmeralda  
Principal, Kapolei High School

IN 2015, A&B PROVIDED  
**140 GRANTS**  
TO PRE-SCHOOLS, K-12  
& UNIVERSITIES

## LAND STEWARDSHIP Re-use Hawaii

Launched in 2007, Re-use Hawaii works to reduce landfill waste by reusing and recycling building material, primarily through deconstruction rather than demolishing buildings and structures. Done by hand, materials are preserved for new uses, recycling and redistribution.

In 2015, A&B partnered with Re-use Hawaii to carefully disassemble several suburban Honolulu residences, seeking to reduce any disturbance to neighboring homes. Additionally, the company provided grant support for Re-use's Hawaii expansion, subsidizing the tools and equipment needed to support multiple crews and expand Re-use's environmental benefit, island-wide.

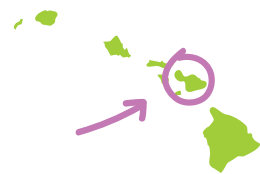
We aim to transform landfill-bound waste into a community resource. Support from A&B helped us build our capacity and broaden our impact on Oahu."

- Quinn Vittum  
Co-founder & Co-executive Director  
Re-Use Hawaii



Re-Use Hawaii crews disassemble structures by hand.

# ON MAUI



## HC&S Puts Heart into Community Work Day

On a single day in March, 153 HC&S employees fanned out across Maui to lend a hand – and their hearts – to 10 community organizations in need of repair and maintenance work. From painting to tree pruning to pothole repairs, employees put their many skills to work, bringing HC&S equipment, supplies, materials and tools when needed to get the job done. At the end of the day, their work added up to 940 volunteer hours.



**Malama Maui Nui** welcomed 20 HC&S volunteers to help sort household batteries for recycling, process and safely dispose of discarded paint, clean and organize storage containers, and grade a small area for additional storage receptacles. This environmental group is dedicated to keeping Maui's environment healthy and beautiful through litter prevention, responsible waste disposal and habitat restoration.

Sixteen volunteers spent 108 hours at the Puunene headquarters of **Feed My Sheep**, where they cleared land to expand the parking lot, weed-whacked the grounds, and hauled large trash items to the dump. The organization's unique mobile food distribution program offers free, nutritiously balanced food to the needy at five locations across Maui each week, giving the equivalent of a week's supply of food to each individual. Working with local farmers, a new mobile produce market provides fresh fruits and vegetables at a 75% discount to qualifying individuals.

**Paia Youth & Cultural Center** was one of the beneficiaries of HC&S' Community Work Day. The center is open year-round and serves some 425 youth from Paia and neighboring communities, offering a variety of social, educational, recreational, cultural and vocational activities for ages 9 to 19, free of charge. A team of 11 HC&S employees painted, mowed, weed-whacked, and filled parking lot potholes. Sister company Grace Pacific donated paving materials for the pothole project.

## COMMUNITY WORK DAY HOURS

**153** EMPLOYEE VOLUNTEERS  
HOURS DONATED: **940**

- Maui Humane Society: **40 hrs**
- Friends of the Library: **38 hrs**
- Feed My Sheep: **108 hrs**
- Sugar Museum: **26 hrs**
- Paia Youth & Cultural Center: **70 hrs**
- Doris Todd: **41 hrs**
- Maui Economic Opportunity: **68 hrs**
- Boys & Girls Club: **258 hrs**
- Malama Maui Nui: **162 hrs**
- UH Maui College: **129 hrs**



The Maui Non Profit Directors Association presented HC&S with its 2015 Community Business Award in recognition of the company's employee volunteerism and many corporate contributions.



### EDUCATION

## Kihei Elementary School Library

Built in the 1980s, the Kihei Elementary School Library services a student body of over 800. While the book collection was periodically updated and expanded, the library building was outdated and in need of renovation. Kihei Elementary, whose motto is "Do whatever it takes to succeed", made it their mission in 2015 to secure funds to commence a major library renovation.

A \$10,000 HC&S Community Initiative grant financed new flooring and baseboards and modern, customized bookshelves, breathing new life in to the heart of the campus. The refurbished library is now the source of pride for Kihei Elementary students and a well-used venue for family literacy nights and school-community events.

## A&B MATCHES VOLUNTEER HOURS WITH A \$250 DONATION

A&B has long encouraged its employees to contribute to the charities most important to them and their families. Our employees actively volunteer with PTAs, churches, environmental programs and human services organizations in communities across Hawaii, providing personal time and sweat equity. For over three decades, A&B has "matched" employee volunteer hours with a \$250 donation to the charity.

### HEALTH & HUMAN SERVICES

## Assistance Dogs of Hawaii

Over the last decade, A&B has supported Assistance Dogs of Hawaii's efforts to improve the lives of children and adults in need with the help of specially trained dogs, including service, hospital, courthouse, social therapy and seizure response dogs.

One of the Maui-based organization's efforts includes an innovative children's literacy program, Paws for Reading. The program supports keiki who have reading difficulties or special needs and involves reading out loud to specially trained dogs. Through this non-judgmental interaction, children build their confidence and improve reading skills. A \$10,000 HC&S Community Initiative grant provided a boost to this program, credited with transforming non-readers into enthusiastic booklovers.

Thanks to grant support from companies like A&B and HC&S, we are able to provide assistance dogs and lifetime follow-up support free of charge."

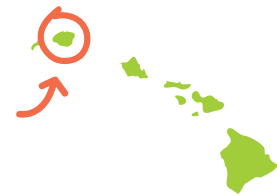
- Maureen Maurer  
Executive Director  
Assistance Dogs of Hawaii



Paws for Reading sessions take place at various libraries on Maui as well as a local youth club, preschool and homeless shelter.



# ON KAUAI



## Garden Island Giving

A&B's support of Kauai United Way stretches back to 1983. Since then, 100-plus grants totaling nearly \$700,000 have provided a reliable funding source for KUW and its 29 participating agencies. From parenting classes and substance abuse outreach to hospice care and emergency shelter, these agencies provide more than 80 vital social services to Garden Island residents.

Executive Director Scott Giarman also appreciates the company's underwriting support of KUW's annual meeting, a luncheon that brings together its member agencies and the businesses that support them.

Tom Shigemoto, A&B Properties vice president-planning, was born and raised on Kauai and has served on the KUW board of directors since 1997. "I am now a senior member on the board and am honored to continue to help this gracious, generous and dedicated entity to help people in need," he says. "It is an organization that enhances people's lives here on my island home and gives all of us hope for a better future."

## COMMUNITY Plantation Legacy Honored

Over its 145-year history, Alexander & Baldwin has welcomed a diverse family of employees, including waves of immigrants who came to work on Hawaii's plantations, including Hawaiian Commercial and Sugar Co. on Maui. Filipinos were the last of these immigrant groups to arrive, and in 2015 they still accounted for 65% of HC&S' employees.

A&B was among the honorees at the Filipino Community Center's annual Bayanihan Gala, which recognized six organizations and individuals that have played a significant role in the state's plantation heritage.

“We know we can count on A&B each year.”

- Scott Giarman  
Executive Director, KUW

2015 GIVING  
TO UNITED WAYS ACROSS HAWAII  
COMPANY GIVING = \$162,000  
EMPLOYEE GIVING = \$140,000



Immigrant workers were the heart and soul of Hawaii's sugar companies and their communities.

# ON HAWAII



## Nourishing Those in Need

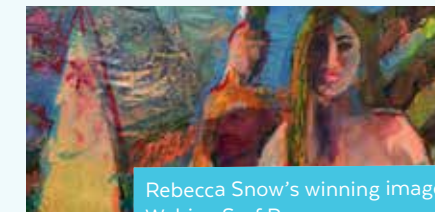
Since 1989, The Food Basket has helped to feed the hungry on Hawaii Island while addressing the root cause of hunger and other social ills: poverty.

By collecting food that otherwise would be wasted, connecting with local farmers to procure nutritious surplus produce, and organizing food drives with partner businesses, this island-wide food bank redistributes more than 2.5 million pounds of food each year and serves 12,000 needy individuals each month.

For more than two decades, A&B Fleet Services' Big Island employees have helped to fill The Food Basket's shelves with donations of cash, canned goods and other non-perishables. Their generosity is supplemented by support from A&B.

## CULTURE & THE ARTS

### Hawaii Watercolor Society



Rebecca Snow's winning image, Wahine Surf Pro

The Hawaii Watercolor Society was founded over 50 years ago to inspire interest in water media through workshops and exhibits. Since 1986, A&B has provided regular annual support to this arts organization through underwriting of the Jurors' Award and prize at the society's annual Members' Exhibit.

“The award from Alexander and Baldwin was such a great surprise. It was also a real motivator to keep painting from my heart and capturing the joy of living on Oahu.”

-Rebecca Snow, plein air artist and winner of the Juror's Award presented by Alexander & Baldwin, Inc.

FOR 30+ YEARS A&B HAS SUPPORTED THE ARTS IN HAWAII, MATCHING EMPLOYEES MONETARY CONTRIBUTIONS TO ARTS-FOCUSED & CULTURAL NON-PROFITS



## Preserving Maui's Sugar Industry Heritage

The Alexander & Baldwin Sugar Museum was established in 1980 with funding from Alexander & Baldwin, Inc., as a tribute to company founders Samuel T. Alexander and Henry P. Baldwin. In 2015, the Museum marked the silver anniversary of its educational outreach program, welcoming over 52,000 Maui school children and their teachers since its introduction in 1990.

Exhibits and hands-on activity stations throughout the museum keep history alive for future generations, helping them understand how the sugar industry and multi-ethnic plantation lifestyle helped shape their community. While admission for students is just \$1, the rising cost of bus transportation to the museum can keep some youngsters from participating in their school field trip.

Annual grants from A&B have enabled the museum subsidize transportation costs for 2nd grade students across Maui so that none would be left behind.



## MILESTONES IN GIVING

### 35 YEARS

**Bernice Pauahi Bishop Museum, Oahu**  
Total giving: \$770,000  
Showcasing Hawaiian artifacts and royal family heirlooms of the Princess as well as millions of other treasured artifacts from Hawaii and the Pacific.

**Alexander & Baldwin Sugar Museum, Maui**  
Total giving: \$1.6 million + in-kind support  
Preserving and presenting the history and heritage of the sugar industry, and the multi-ethnic life which it engendered, for residents and visitors.

“Bus subsidiaries are critical for the schools. If we didn’t have that support, kids would not be able to come. Last year, the Sugar Museum hosted second-graders from 19 of Maui’s public and private elementary schools.”

- Roslyn Lightfoot  
Director, A&B Sugar Museum

### 15 YEARS

**PBS Hawaii, Statewide**  
Total giving: \$82,000  
Serving the local community through educational and enriching programming for all ages.

### 5 YEARS

**After-School All-Stars, Oahu & Hawaii Island**  
Total giving: \$22,000  
Operating after-school programs, academic support, enrichment activities and sports in ten middle schools on two islands.

## Giving from the Heart Employee Giving Spotlight



A&B employees volunteered at Honouliuli Forest Reserve during Trust for Public Land’s “Day on the Land”. By collecting native seeds, eradicating weeds, and clearing trails, volunteers helped steward this East Waianae habitat, home to 35 threatened or endangered species – 16 of them found nowhere else in the world.

At the 2015 Hawaiian Commercial & Sugar Company Community Work Day, plantation employees logged 940 hours of volunteer service at 10 sites across Maui. One of the locations was the University of Hawaii Maui College’s Kula Agricultural Park, where a team of HC&S employees weeded trial crops.



Armed with shovels, sifters and garbage bags, A&B employees and their families fanned out across the sand at Kailua’s Kalama Beach Park to painstakingly collect harmful microplastic, the tiny plastic pieces that litter beaches and endanger reefs and sea life.

A&B PROPERTIES  
GRACE PACIFIC  
HC&S  
A&B FLEET SERVICES  
KAHULUI TRUCKING &  
STORAGE  
MAUI BRAND SUGAR  
MCBRYDE RESOURCES  
EAST MAUI IRRIGATION



ALEXANDER & BALDWIN, INC.

822 Bishop Street  
Honolulu, HI 96813  
[www.alexanderbaldwin.com](http://www.alexanderbaldwin.com)  
© 2016

## KOKUA GIVING PROGRAM

A&B Kokua Giving is a charitable contributions program conducted by Alexander & Baldwin, Inc. on behalf of its operating companies (see listing on left) utilizing funds allocated from the company's profitable business activities.

### OUR PRIORITIES

The Program's objective is to improve the quality of life in communities where A&B companies operate and where our employees reside. Within these areas, our priorities are to support organizations and projects that address significant and/or high priority community needs; have a nexus to A&B's business activities and/or employees; and have the proven support of the community.

Focused on Hawaii charities, the Program works to support communities through broad-based giving for—but not limited to—health and human services, education, community, culture and the arts, agriculture and farming, and the environment.

### APPLICATION FORM AND ADDITIONAL INFORMATION

Website: [alexanderbaldwin.com](http://alexanderbaldwin.com)

Phone: 808.525.6642

Email: [giving@abinc.com](mailto:giving@abinc.com)

For expanded overviews and video stories, go to the corporate responsibility section of the A&B website ([www.alexanderbaldwin.com](http://www.alexanderbaldwin.com)).



*Following a visit to the A&B Sugar Museum, artistic Maui 2<sup>nd</sup> graders often send colorful pictures and notes of appreciation for bus transportation to the Puunene site. More on the Museum's educational program on page 8.*