

Alexander & Baldwin  
Foundation

---

**1993 Review of Giving**

*hanai  
ho'ola  
ho'omana*

*...to nourish...to heal...to empower*

## Alexander & Baldwin Foundation

### 1993 Review of Giving

This report lists the many organizations and agencies supported during 1993 with grants from the Alexander & Baldwin Foundation.

We are proud to have formed these partnerships, a combining of resources to improve the quality of life for all.

## Alexander & Baldwin Foundation Directors

John C. Couch  
Meredith J. Ching  
Robert L. Dawdy  
G. Stephen Holaday  
John B. Kelley  
C. Bradley Mulholland  
Robert K. Sasaki

## Hawaii Contributions Committee

*Chair*, Meredith J. Ching  
John C. Couch  
Robert L. Dawdy  
G. Stephen Holaday  
John B. Kelley  
Robert K. Sasaki

## Mainland Contributions Committee

*Chair*, Raymond J. Donahue  
C. Bradley Mulholland  
Gary J. North  
Paul E. Stevens  
E. Sloan White

# ho'omana



*John C. Couch, president and CEO of Alexander & Baldwin, Inc., consults with Meredith J. Ching, A&B vice president, during a monthly meeting of the Alexander & Baldwin Foundation Hawaii Contributions Committee.*

**F**or more than a century, Alexander & Baldwin, Inc. has responded to the needs of the communities in which we do business. As one of the oldest and largest Hawaii-based corporations, our efforts have historically been focused on communities within this state. Although that remains true today, as the company has grown, our reach has extended to communities outside of Hawaii. With the passage of time and the growth of the company, our charitable mission has remained the same: to strengthen these communities today, and provide a better quality of life for those who follow. Through the activities of the Alexander & Baldwin Foundation, we continue to pursue that mission.

*Hanai, ho'ola, ho'omana* ... to nourish, to heal, to empower. These powerful Hawaiian words together convey the essence of the A&B Foundation's efforts and embody the basic nature of our funding process. Our contributions program is intended to be more than just a source of funding for worthwhile causes: it seeks to build partnerships that create lasting value.

As economic times tighten, however, so does the availability of charitable dollars. "Just as our businesses require continuous improvement and constant innovation to remain competitive in these challenging times," says John C. Couch, A&B president and chief executive officer, "non-profit agencies need to be increasingly creative and efficient in their use of funds."

"We expect agencies to periodically re-evaluate their efforts and create new, cost-effective programs in response to community needs," said Couch, who is also an A&B Foundation officer, director and a member of the Hawaii Contributions Committee.

Meredith J. Ching, A&B Foundation officer, director and chair of the Hawaii Contributions Committee explains that, while there are standard criteria the committee uses as guidelines in making its decisions, each request is considered individually.

"We have basic financial and operational measures for evaluating the efficiencies of these organizations," Ching says, "but we also look for the inspiration—the vision, if you will—which precipitated the request for our support. And since many of our employees donate considerable time to worthy causes, it's not unusual that many of the agencies we support financially are those supported by our employees as volunteers."

"We invite you to review our year of giving," Couch says. "We are proud to have formed partnerships with these agencies and organizations and applaud their important contributions to our communities."



# Oahu

## Community

Boy Scouts of America - Aloha Council  
 Boys and Girls Clubs  
 Edward J. Doty Foundation  
 First Night Honolulu  
 The Friends of the Pearl Harbor Memorial Fountain  
 Friends for Diamond Head  
 Girl Scout Council of Hawaii  
 Government Efficiency Team  
 Governor's Advisory Committee on Ending Litter  
 Governor's/Mayors' Prayer Breakfast  
 Great Aloha Run  
 Hawaii Human Development  
 Hawaii Women's Legal Foundation  
 Honolulu City Lights  
 Honolulu Zoo Hui  
 Honolulu Zoological Society  
 Japanese Women's Society of Honolulu  
 Moiliili Community Center  
 Pacific and Asian Affairs Council  
 Sons and Daughters of 442nd Veterans  
 Soroptimist International of Honolulu

Special Olympics Hawaii  
 Statewide Volunteer Services  
 YMCA - Armed Services  
 YMCA of Oahu  
 YWCA of Oahu

## Cultural

Chamber Music Hawaii  
 Diamond Head Theatre  
 Hawaii Army Museum Society  
 Hawaii Maritime Center  
 Hawaii Opera Theatre  
 Hawaii Public Radio  
 Hawaii Watercolor Society  
 Hawaiian Historical Society  
 Historic Hawaii Foundation  
 Honolulu Academy of Arts  
 Honolulu Symphony Society  
 Honolulu Theatre for Youth  
 Japanese Cultural Center  
 Kamehameha School Song Festival  
 Kumu Kahua - Hawaii's Local Theatre  
 Manoa Valley Theatre  
 Pacific Aerospace Museum  
 The Contemporary Museum

## Educational

Academy of the Pacific  
 ASSETS School  
 Chaminade University  
 Dole Intermediate School  
 Forest Institute  
 Hanahauoli School  
 Hawaii 4-H  
 Hawaii Association for the Education of Young Children  
 Hawaii Children's Museum  
 Hawaii History Day  
 Hawaii Council on Economic Education  
 Hawaii Science and Engineering Fair  
 Holy Trinity School  
 Junior Achievement - Oahu  
 Project BEST  
 Public Schools of Hawaii Foundation  
 Punana Leo O Honolulu  
 Roosevelt High School  
 St. Anthony School  
 The Early School  
 University of Hawaii Foundation:  
 - Business Night  
 - Corporate Affiliates  
 - Koa Anuenue



### Environmental

DBEDT - Hawaii Energy/Tide  
Calendars  
Moanalua Gardens Foundation  
Recycling Association of Hawaii  
The Nature Conservancy

### Health & Human Services

Aloha United Way  
Alzheimer's Association  
American Cancer Society -  
Hawaii Division  
American Diabetes  
Association  
American Heart Association  
American Lung Association  
American Red Cross  
Child & Family Service  
CSI, Inc.  
Easter Seal Society of Hawaii  
Friends of the Cancer  
Research Center of Hawaii  
Goodwill Industries of Honolulu  
Habilitat  
Hawaii Family Stress Center  
Hawaii Meals on Wheels  
Institute for Human Services  
Kalihi Palama Health Center

Kapiolani Medical Center for  
Women & Children  
March of Dimes  
Multiple Sclerosis Society  
Shriner's Hospital  
United Cerebral Palsy  
Association  
Waikiki Health Center  
YMCA - Honolulu  
You Can Make A Difference

(opposite page, far left) Visiting the new **Kalihi Palama Health Center** construction site are (l - r) KPHC Executive Director Beth Giesting, KPHC Board President David Trask, A&B Chairman R.J. Pfeiffer, A&B VP Meredith J. Ching and KPHC Board Vice President Anthony Guerrero. KPHC received \$100,000 from the A&B Foundation. (right) **American Cancer Society - Hawaii Division** boosted the morale of kids afflicted with cancer with a summer camp supported by the A&B Foundation.

(this page, above left) Students from **Dole Intermediate School** show off their computer expertise—knowledge gained in part through an A&B Foundation grant which opened the door for the school to purchase computers and apply them to classroom use. (above middle) **Aloha United Way** representative Randall Moore (l) accepts the A&B Foundation 1992-93 contribution from Matson representative David Franco as boys at Kalihi Palama YMCA take a quick break from swimming. (above right) This 50-foot Christmas tree brightened up Honolulu Hale this past holiday season as the centerpiece of the **Honolulu City Lights** celebration. Shipping of the tree and other celebration costs were funded by a grant from the A&B Foundation.



# Maui

## Community

Adult Friends for Youth  
 Aloha Festivals  
 Big Brothers/Big Sisters of Maui  
 Boy Scouts of America - Maui  
 Kahului Town Association  
 Kaulanapueo Church  
 Keanae Congregational Church  
 Maui Animal Aloha Center  
 Maui Community Work Day  
 Maui County Crime Stoppers  
 Maui County Fair Association  
 Maui County Fire Fighter Safety Program  
 Maui Up-Country Little League  
 Pacific Primate Sanctuary  
 St. Gabriel Church  
 Wailuku Main Street Association  
 YMCA - Maui Family

## Cultural

A&B Sugar Museum  
 Maui Academy of Performing Arts  
 Maui Community Arts & Cultural Center  
 Maui Community Theatre  
 Maui Historical Society  
 Maui Philharmonic Society  
 Maui Symphony Orchestra

## Educational

Hawaii Nature Center  
 Iao Intermediate School  
 Junior Achievement - Maui  
 Keanae School  
 University of Hawaii Foundation - Maui Community College  
 Maui High School  
 Maui Hui Malama  
 Molokai High & Intermediate School  
 Montessori School of Maui  
 St. Anthony Jr. Sr. High School

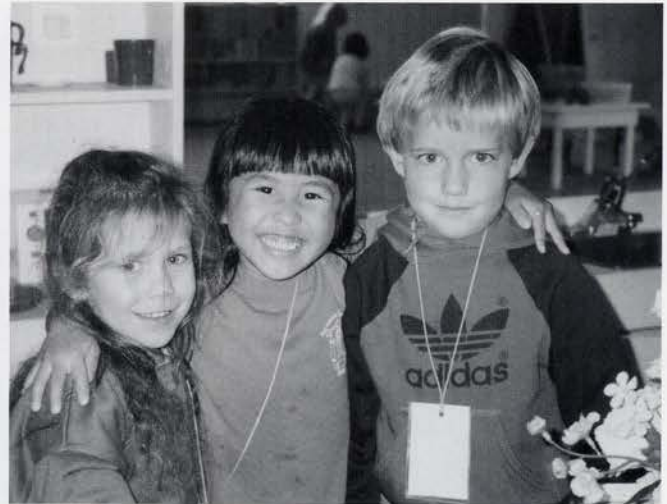
## Health & Human Services

Aloha House  
 Association for Retarded Citizens - Maui  
 Epilepsy Foundation of Hawaii  
 Hale Makua  
 Hospice Maui  
 J. Walter Cameron Center  
 Ka Lima O Maui  
 Maui AIDS Foundation  
 Maui County Nutrition Project  
 Maui Kokua Services

*(above left) Maui's Hale Makua promotes fitness programs geared to the needs and abilities of its senior citizens. A \$50,000 grant from the A&B Foundation will help Hale Makua expand its facilities. (above right) Maui United Way's Ice Cream Festival, with fun and games for all ages, proved to be an exciting way to raise money. The A&B Foundation is a top donor to MUW.*

Maui United Way  
 National Federation of the Blind - Maui  
 Planned Parenthood of Hawaii  
 Salvation Army

ho'ola



## Kauai Community

Adult Friends for Youth  
Kauai Humane Society  
Koloa Plantation Days  
Ola Ka'uhane Celebration

## Cultural

Hawaii International Film Festival  
Kauai Historical Society  
Kauai-Tahiti Fete

## Educational

Ele'ele Elementary School  
Hawaii 4-H  
Hawaii State PTA (Kauai)  
Junior Achievement - Kauai  
University of Hawaii Foundation -  
Kauai Community College  
Kauai Independent Daycare Services  
Koloa Elementary School

## Environmental

National Tropical Botanical Garden

*(above left) Volunteers at Limahuli Gardens, a National Tropical Botanical Garden site on Kauai, restore taro patches after flood damage following Hurricane Iniki. The A&B Foundation provides ongoing support to NTBG. (above right) Preschool-age children form strong friendships while they learn and play at Kauai Independent Daycare Services. An A&B Foundation grant helped provide a new playground structure for this preschool.*

## Health & Human Services

American Heart Association  
American Lung Association  
Hospice Kauai  
Kauai United Way  
Wilcox Hospital Foundation

## Big Island

Hale Halawai Holualoa  
Hawaii Concert Society  
Hawaii Island United Way  
Hawaii Preparatory Academy  
Lyman House Memorial Museum  
Multiple Sclerosis Society - Hawaii  
University of Hawaii Foundation - University of  
Hawaii at Hilo



## Community

Bar Association of San Francisco  
 Bay Area Urban League  
 Boy Scouts of America - Bay Area  
 Christina Ann Ulmer Fund  
 Edgewood Children's Center  
 Episcopal Sanctuary  
 Glide Memorial-Mo's Kitchen  
 Guardsmen - San Francisco  
 Jubilee West - Oakland  
 KQED Educational Television  
 League of Women Voters  
 Oakland Festival at the Lake  
 Open Studio at Hunters Point  
 Raphael House  
 Seventh Day Adventist Church  
 St. Vincent's Day Home

## Cultural

American Conservatory Theatre  
 Asian Art Museum  
 California Historical Society  
 Filoli Center  
 Fine Arts Museum of San Francisco  
 Marble Valley Center for the Arts  
 Oakland Ballet  
 Oakland Museum  
 San Francisco Ballet  
 San Francisco Opera Association

## Educational

Bay Area Science Fair  
 Charles Armstrong School  
 Golden Gate University Law School  
 Junior Center of Art and Science  
 Mathematics, Engineering & Science Achievement  
 Mission Language and Vocational School  
 Oakland Youth Orchestra  
 Pacific Legal Foundation

## Health & Human Services

A Place Called Home  
 American Cancer Society  
 American Red Cross  
 Association for Retarded Citizens, CA  
 Bay Area Lupus Foundation  
 Bay Area United Way  
 California Foundation for the Retarded - Clausen House  
 California Pacific Medical Center & Foundation  
 Community Law Center  
 Guide Dogs for the Blind  
 Marin Literacy Program  
 Missionaries of Charity  
 National Council on Alcoholism

*(above left) Raphael House in San Francisco has given respite and renewed hope to more than 20,000 members of homeless families since opening in 1972. (right) Student participants in the Mathematics, Engineering & Science Achievement program clock the heartbeat of a horse as part of an academic decathlon during their Leadership Conference. The A&B Foundation has provided support for both of these Bay Area organizations.*

Salvation Army - California  
 St. Anne's Home  
 St. Anthony's Dining Room  
 Tarlton Foundation  
 Tenderloin Senior Organizing Project

## Maritime

California Maritime Academy  
 Coast Guard Academy Foundation  
 Fleetweek - San Francisco  
 Hugh Gallagher Memorial Award  
 Jeremiah O'Brien Library Ship  
 International Maritime Center  
 National Maritime Museum  
 North American Maritime Ministry Conference





*(left) The California Pacific Medical Center received a \$10,000 grant from the A&B Foundation which supported the medical center's Visiting Nurses & Hospice Program. The program provides care at home to patients who are ill, recovering, disabled or dying.*

### Southern California

Assistance League of San Pedro  
and Palos Verdes  
Boy Scouts of America-  
Southern California  
Center for Plant Conservation  
Long Beach Flying Wheels  
S.S. Lane Victory  
United Way of Southern  
California

### Pacific Northwest

Chief Seattle Club  
Corporate Council for the Arts  
Portland United Way  
Seattle United Way

### National

American Merchant Marine  
Library Association  
U.S. Merchant Marine  
Academy

### Pacific Islands

Ponape Agriculture & Trade  
School

Southern California / Other

ho'omana

# Matching Gifts

## Employee Participation

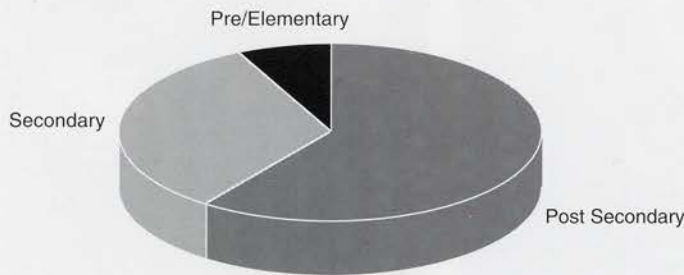
Through our dollar-for-dollar matching gifts program, the employees, retirees and directors of Alexander & Baldwin, Inc. and its subsidiaries are empowered to direct the A&B Foundation's support to the educational and cultural organizations of their choosing.

Generosity was the key word this year, as these donors supported more than a hundred worthy causes, an increase over last year.

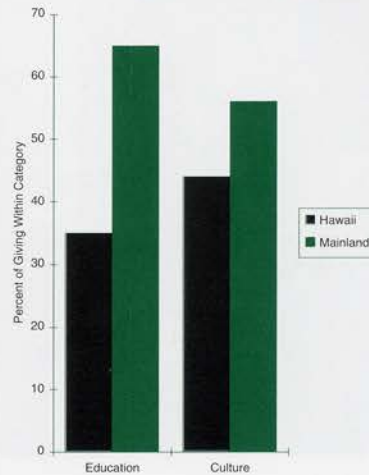
### Education

Faithful alumni, devoted parents and loyal friends made more than 180 gifts totaling nearly \$50,000 this year. The A&B Foundation matches these gifts up to \$2,000 per donor per year.

Matching Gifts to Education



Matching Gifts - By Region



Here's a breakdown of the donations: 60 percent of the funds went to colleges and universities in Hawaii and on the Mainland. Roughly 7 percent went to elementary schools and preschools and the balance was donated to secondary schools, including those with students in kindergarten through grade 12.

### Culture

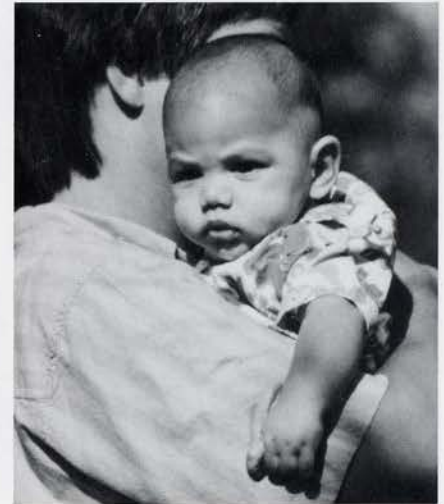
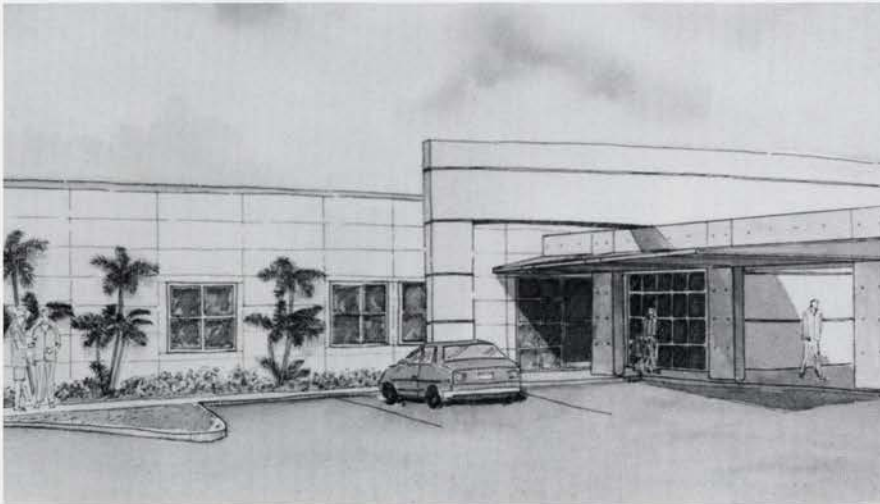
Individual donations totaling close to \$15,000 were directed to cultural and arts organizations designated by our donors—and were matched by the A&B Foundation.

Some examples: Hawaii Public Radio and Hawaii Public Television; educational television (KQED and KTEH) in California; the San Francisco Symphony and San Francisco Opera; Hawaii's Bishop Museum; and the Asian Art Museum.

A&B's retirees contributed one quarter of the donations directed to cultural and arts organizations.

The A&B Foundation matches gifts to qualified cultural and arts organizations up to \$1,000 per donor per year.





*Responding to the needs of our communities, we present these select charitable organizations which have received support from the A&B Foundation this past year.*

### **Child & Family Service**

Child & Family Service is Hawaii's oldest and largest private social service agency, reaching approximately 38,000 individuals each year and focusing on Hawaii's children, families and communities.

This year, in addition to a grant of \$2,500 to support its adolescent group homes, Child & Family Service was awarded a \$40,000 capital grant by the Alexander & Baldwin Foundation toward the construction of the CFS Family Center in Ewa on Oahu.

The family center will address the social needs of the rapidly expanding Central Oahu population, while consolidating many of the services now offered by

CFS into one conveniently located building.

When completed, the 26,000-square-foot family center will include the Alger Healthy and Ready-to-Learn Clinic, as well as program and administrative offices. Construction of Phase I is scheduled to begin in July and should take one year to complete.

### **Wilcox Hospital Foundation**

Wilcox Hospital in Lihue, Kauai provides emergency services and full medical care to the Garden Island's residents and visitors.

Established in 1938, the existing Wilcox Hospital building was completed in 1972. Over the last 20 years, use of the hospital's emergency services has nearly doubled from 7,000 to 12,000 patients annually, making expansion a critical need.

*(above left) The new emergency services facility at Wilcox Hospital will meet the growing needs of the Kauai community. (above right) Child & Family Service promotes the role of family in shaping our future communities.*

The Alexander & Baldwin Foundation provided a \$50,000 capital grant to the Wilcox Hospital Foundation to boost its \$4 million capital campaign to expand and renovate both its emergency services area and acute care floors.

The 12,000-square-foot expansion will add a private assessment area, additional examination rooms and a family counseling room to this well-used emergency facility.

## Hawaii Maritime Center

The sole focus of the Hawaii Maritime Center is to preserve and perpetuate Hawaii's time-honored maritime heritage. The center accomplishes this through a dynamic collection of displays and artifacts enhanced by the magnificent *Falls of Clyde* ship docked outside the museum. The center also owns and maintains the Polynesian voyaging canoe *Hokule'a*.

The center opened in 1988, and since then has shared Hawaii's rich maritime history with thousands of island residents and visitors.

School children throughout Hawaii visit the Maritime Center daily to discover Hawaii's sea-going past and the critical importance of the maritime industry to this remote island state. The center is also a valuable resource for educational institutions at all levels.

Alexander & Baldwin has been a major supporter of the Maritime Center from its inception. Most recently, the A&B Foundation contributed \$25,000 to manage the restoration of the *Falls of Clyde*. The *Falls*, a national historic landmark, is the only four-masted, full-rigged ship still afloat. She has the distinction of being the only remaining member of the original Matson fleet.

In addition, the A&B Foundation provided a \$250,000 grant toward the retirement of the center's capital debt.



(above left) *Hawaii Maritime Center* provides school tours daily, perpetuating our maritime culture for Hawaii's youth. (above right) *The Girl Scout Council of Hawaii's* new statewide headquarters in Nuuanu is an historic estate, now under renovation. A capital grant from the A&B Foundation will help make needed improvements.

## Girl Scout Council of Hawaii

This youth services program serves more than 10,000 girls throughout the state with activities designed to develop leadership, character, initiative and a desire to be of service to others.

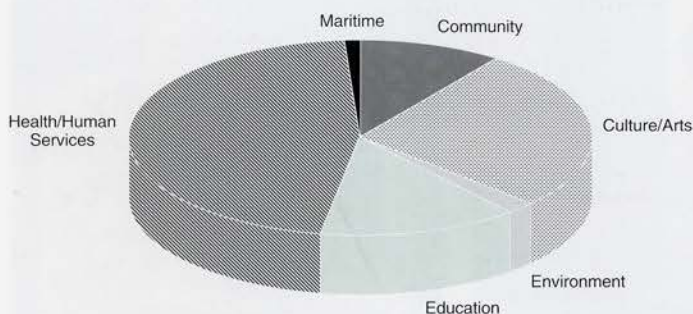
Founded in Hawaii in 1917, the Girl Scout program had the support of then-ailing Queen Lili'uokalani and two troops—at Kamehameha Schools and Kakaako—soon formed.

The council has undertaken a \$4 million campaign to purchase and renovate an historic house on Oahu into a permanent home and headquarters for the Girl Scouting program in Hawaii.

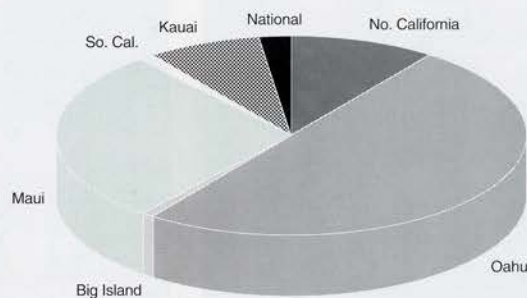
The Alexander & Baldwin Foundation has responded with a \$25,000 grant in support of this project.

The new headquarters will provide administrative and program space as well as a site for workshops, meetings, recreation, and a scouting resource center.

## Giving by Category



## Giving by Region



### By Category

In 1993, the Alexander & Baldwin Foundation responded to the growing need for health and human services in our communities. As a result, there was a significant increase in our charitable giving allocated to such programs—from 38 percent to 46 percent. Sixty percent of this support is made through grants to United Way campaigns which provide operating funds to agencies serving A&B communities.

Support of culture and the arts also grew this year—from 21 percent to 27 percent of overall dollars—due to major grants to the Hawaii Maritime Center, the A&B Sugar Museum and the Maui Community Arts & Cultural Center.

Educational support, a substantial total of nearly \$220,000, dropped from 21 percent to 14 percent of total giving, but participation in our matching gift program remained strong.

These employee-directed dollars represent nearly 20 percent of our total support of education. The Foundation also responded to requests from public and private schools on most islands and in Northern California. Support in this area included grants to Junior Achievement in Hawaii and California; the Hawaii Council on Economic Education; and various academic competitions in the schools.

Community festivals and celebrations, holiday lighting displays, litter control efforts and special community playground structures are among the grants made for general community and civic causes, which make up 10 percent of our total giving, down from 19 percent last year.

A new category, the environment, joined maritime causes to account for the remaining 3 percent of total dollars. Ecosystem protection and awareness/education programs represent

this year's environmental support; regional maritime organizations in Hawaii and California, as well as national causes like the U.S. Merchant Marine Academy and the Coast Guard Foundation, continue to receive aid.

### By Location

Geographically, 87 percent of the Foundation's funds were distributed to organizations within the State of Hawaii. The remaining 13 percent went to agencies on the U.S. Mainland, primarily on the West Coast.

Of the \$1.36 million distributed in Hawaii, 57 percent went to Oahu organizations—many of which serve the entire state. Thirty two percent of Hawaii's funds were donated on Maui.

(opposite page, far left) A&B's John C. Couch (r) and **Bishop Museum's** Thomas C. Leppert introduce the book *Bishop Museum and the Changing World of Hawai'i* at its public debut during a reception at the historic A&B Building. (middle) **Dr. Ken Tucker** (right) briefs the Health-Related Tourism Advisory Panel on Hawai'i's pivotal role in the Pacific health care industry. (right) Students take time to send a thank you for support of **A&B Sugar Museum** tours. Hundreds of these letters are received each year by the Foundation.

---

The Alexander & Baldwin Foundation is funded by the business activity of Alexander & Baldwin, Inc. and its subsidiaries:

**A&B-Hawaii, Inc.**

A&B Properties, Inc.  
Hawaiian Commercial & Sugar Company  
McBryde Sugar Company, Limited  
Kahului Trucking & Storage, Inc.  
Kauai Commercial Company, Limited  
East Maui Irrigation Company, Limited  
Kukui'ula Development Company, Inc.

**Matson Navigation Company, Inc.**

Matson Terminals, Inc.  
Matson Intermodal System, Inc.  
Matson Leasing Company, Inc.  
Matson Services Company, Inc.

*ho'omana*

**For information**, write:  
Alexander & Baldwin Foundation  
P.O. Box 3440  
Honolulu, Hawaii 96801-3440  
or call: (808) 525-6641

© Alexander & Baldwin, Inc. 1994  
Printed by Tongg Publishing Company, Ltd.

Alexander & Baldwin Foundation  
P.O. Box 3440  
Honolulu, Hawaii 96801-3440

*hanai  
ho'ola  
ho'omana*

*...to nourish...to heal...to empower*